

## Community Solar Quick Facts

*Be a part of the program for as little as \$19 a month.*

*Receive monthly production credits equivalent to your percent of system production for that month.*

*Excess credit will be carried forward from month to month.*

*Continue to receive the benefits of the Switch Makes Cents Program.*

*Purchase today and avoid future rate increases. The value of the credit will increase as rates increase over the 20 years.*

### Western Iowa Power Cooperative

809 Hwy 39 N  
Denison, IA 51442

418 East Iowa Ave  
Onawa, IA 51040

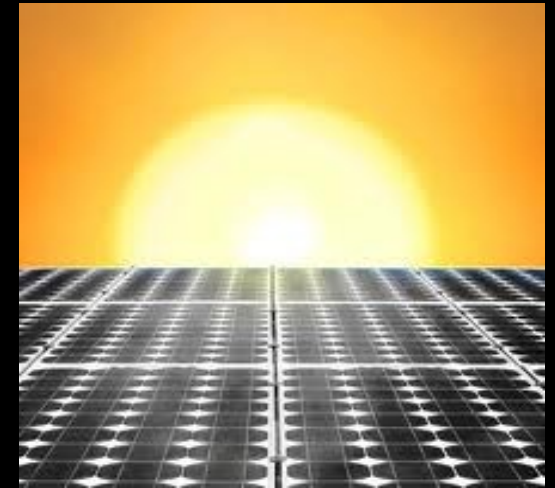
[www.wipco.com](http://www.wipco.com)

**1-800-253-5189**

## Why Invest In Community Solar?

- Protect yourself from future energy price increases.
- Switch Makes Cents Program would still be available to you.
- No change to the look of your home.
- No equipment maintenance.
- No rooftop required.
- Concerns of roof and shingle warranties resolved.
- Can continue to enjoy your shade trees.
- Great opportunity to get involved in solar.
- Offset personal electricity use.
- Property taxes won't increase.
- No additional insurance costs.
- Valuable land isn't tied up.
- Production credit received right on your monthly bill.

## COMMUNITY SOLAR



**1-800-253-5189**

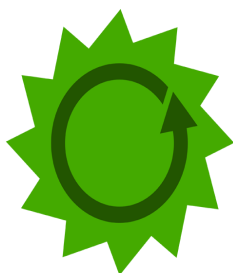
**WIPCO**  **WESTERN IOWA  
POWER COOPERATIVE**  
Your Touchstone Energy® Partner 

## Community Solar

Western Iowa Power Cooperative continues to listen to our membership and has developed another new Green Renewable Energy program.

We understand that not everyone has an ideal location for solar or maybe you are looking to invest in renewables on a smaller scale. Community Solar may be the right fit for you.

This program has been created to allow Members an opportunity to assist the Cooperative in developing solar facilities, the output of which will displace energy generated from other generating units, including fossil fuel units.



**Green  
Renewable  
Energy**

### How Does The Program Work?

The Cooperative will erect a utility-scale solar array and you, as our Member, will have the opportunity to subscribe into the program at an amount that is comfortable for you.

In return you will receive a monthly production credit equivalent to your percent of system production that month. You will continue to receive monthly production credits for the life of the 20-year term. Production will fluctuate from month to month as a result of weather and sun hours.

Each Panel is 410 watts and will produce approximately 425 kilowatt hours annually.

### No Limits

There is no limit to the number of panels you may subscribe to. Any excess credits will be rolled over to the following month's energy bill. Unused credits at the end of the 20 year term shall be forfeited, so let us help you determine how many panels you need.

### What Happens if I Move?

You can either change the service address of where you would like the credits applied within WIPCO's service territory or assign the agreement to another individual or entity within WIPCO's service territory.

### What Does It Cost?

Subscribe into the Community Solar program to receive production credits applied to your energy bill.

**Full solar panel ~~\$1080~~ \$898**

**Half solar panel ~~\$552~~ \$450**

### 20 Year Terms

**Round 1 June 2015—May 2035**

**Round 2 June 2016—May 2036**

*You can start anytime, but don't delay  
for maximum benefits!*

### Payment Plans Available

*Monthly installments available  
as low as \$19 a month.*

To make the project affordable to as many Members as possible, we do have payment plans available. You may choose to pay over a 12-month or 24-month period without interest. Production credits begin upon payment

**For more information call**

**1-800-253-5189**

*20% of people that would like to have solar at their location are able to...  
Community Solar allows us to have an option for all of our Members.*